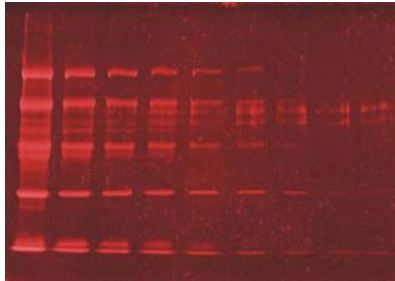


Stains for the Protein Electrophoresis

New stains in the visible and fluorescent range

- for the staining of proteins in gels, AmphiGreen even on blots
- high sensitivity
- very stable binding between stains and proteins
- **completely reversible staining**



- fast destaining of the gels for the use in the later protein analysis
- ready-to-use solution, 1000 ml sufficient for 30 mini gels (5 x 8 cm, 1 mm thick)
- 3 times reusable

Visible range: AmphiBlue® Visopt

- for visible staining of proteins in gels
- excitation with white light (or white light plate or white top-light)
- proof sensitivity 3 - 5 ng/mm²
- alternative to CoomassieBlue™

Fluorescent range: AmphiGreen® Fluo

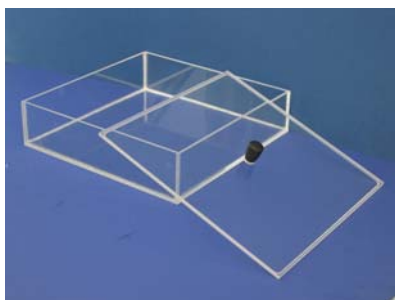
- for fluorescence staining of proteins in gels or on blots
- excitation wavelength 365 nm
- emissions wavelength (Peak) 520 nm
- proof sensitivity 3 - 5 ng/mm²
- very fast destaining - only 30 minutes

Fluorescent range: AmphiRed® Fluo

- for fluorescence staining of proteins in gels
- excitation wavelength 312 nm, 460 nm
- emissions wavelength (Peak) 630 nm
- proof sensitivity 1 - 3 ng/mm²
- more sensitive as currently available products

Description	Quantity	Order No.
AmphiBlue Visopt	500 ml	LN03-K1015
AmphiBlue Visopt	1000 ml	LN03-K1020
AmphiGreen Fluo	500 ml	LN03-K1035
AmphiGreen Fluo	1000 ml	LN03-K1040
AmphiRed Fluo	500 ml	LN03-K1055
AmphiRed Fluo	1000 ml	LN03-K1060

UV-transparent staining and destaining tray



- simplifies the working steps at the destaining of the gels
- to be placed directly on the UV transilluminator
- UV-transparent base
- UV-non-transparent lid and sides
- suitable for the use on shakers
- internal dimensions (L x W x H) 210 x 210 x 50 mm
- more sizes on request

Description	Order No.
Destaining tray excl. lid	90-90-701
Destaining tray incl. lid	90-90-702