

# Molecular Weight Markers

## DNA ladder, loading buffer

### pBR322 *Msp* I DNA ladder

#### Description

pBR322 *Msp* I plasmid DNA digest

#### Size range / number of bands

9 - 622 bp / 21

#### Concentration

50 µg/ml

#### Scope of supply

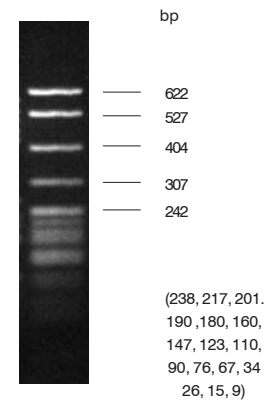
The pBR322 *Msp* I DNA ladder is supplied in TE buffer with a separate vial of 6x loading buffer. (Description on page 143)

#### Note

Typically, 2 µl DNA ladder should be mixed with 1.5 µl of 6x loading buffer and made up to 10 µl for loading.

#### Storage Conditions

For routine use, the DNA ladder should be stored at 4 °C. For a longer storage, it is recommended to freeze it at -20 °C. The ladder will be shipped on ice.



Description	Quantity	Order No.
pBR322 <i>Msp</i> I	50 µg (100 runs)	40-1400-07

### Loading buffer for DNA ladders

(included in the scope of supply of DNA ladders)

#### Composition

15 % (w/v) Ficoll®400, 0.06 % (w/v) bromphenol blue, 0.06 % (w/v) Xylencyanol FF, 30 mM EDTA

#### Note

Add 1 volume of loading dye to buffer to 5 volumes of samples to be loaded onto the gel. Bromphenol blue and Xylencyanol migrate at approx. 300 bp and 4,000 bp respectively in 0.5 - 1.4 % agarose gel concentration with 0.5x TBE.

#### Storage Conditions

Loading buffer can be stored at room temperature. The shipment will be made at ambient temperature.