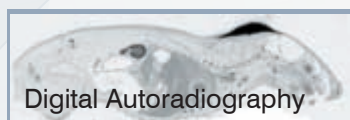


Your Specialist for
PCR, Electrophoresis, Bio-Imaging,
TLC & Radioanalytics

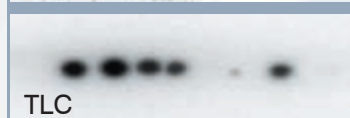
biostep[®]

CR35bio Image Plate Scanner

Detection of
Radioactivity • X-Radiation • UV Light
by Image Plate Technology



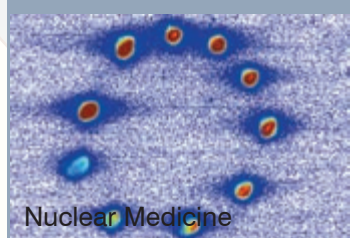
Digital Autoradiography



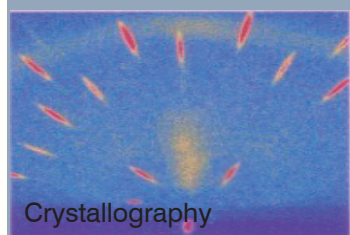
TLC



PET



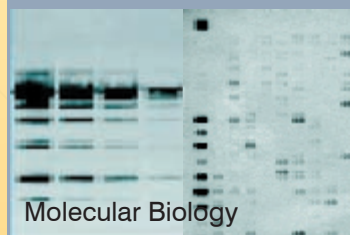
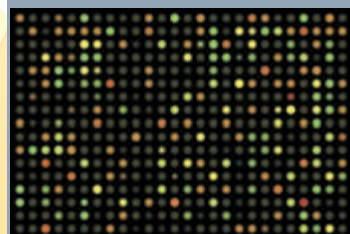
Nuclear Medicine



Crystallography



Botany



Molecular Biology

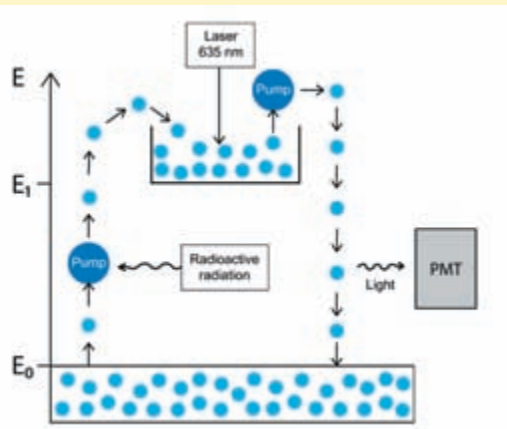


Image Plate Reader/Scanner

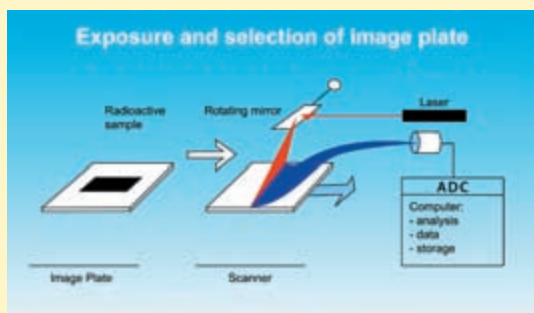
- professional image plate scanner system for detection of radioactive nuclides, UV and X-radiation
- for each type of radioactively stained gels, blots, leaves, slides ...
- high resolution and dynamic range for extraordinary image quality (up to 12.5 μm pixel size) and dynamic (16 bit)
- excellent detection sensitivity
- very short scan time, e.g. < 5 min for image plate 18 x 24 cm
- suitable for all flexible image plates available on the market (max. size 35 x 50 cm)
- 10 up to 20 times faster than films
- integrated eraser (defeatable)
- compact and ergonomic design
- operating system: Windows XP, Win7, USB 2.0 port

www.biostep.de

Physical principle and functionality of Image Plate Technology



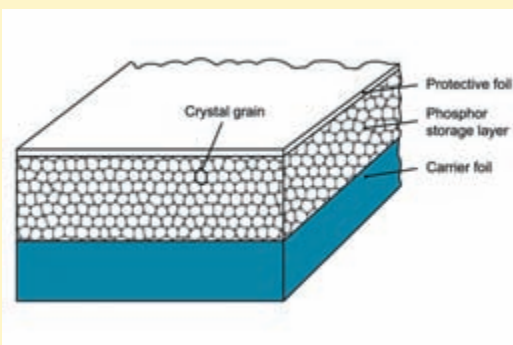
- During exposure of IPs by high radiation, electrons are excited and stored.
- After exposure (**10 up to 20 times faster than films**), IPs are read out in the scanner.
- In this connection, excited electrons are reconstituted by a specially designed LED laser (635nm).
- The light produced will be amplified and collected by a photo-multiplier.
- The signal received can be stored as digital image and transferred to the PC via USB connection for further processing and analysis steps.



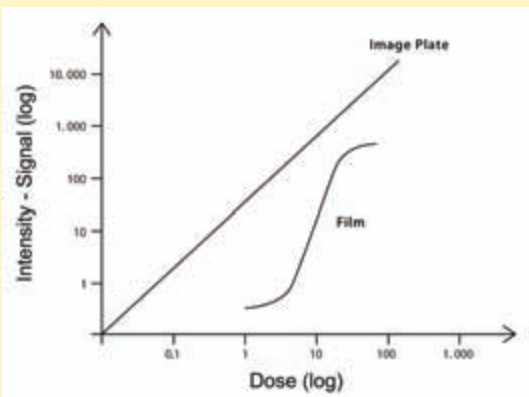
Setup and principle: Image Plate (IP)

The Image Plate consists of 3 layers:

- **Protective foil:**
avoids contamination, thus also suitable for wet samples
- **Phosphor storage layer:**
ensures hypersensitive detection of impinging radiation
- **Flexible carrier foil**

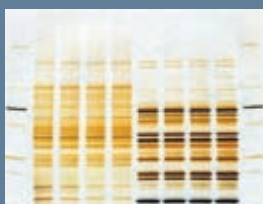
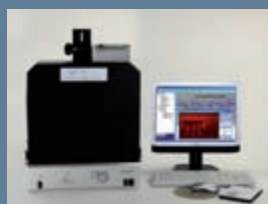


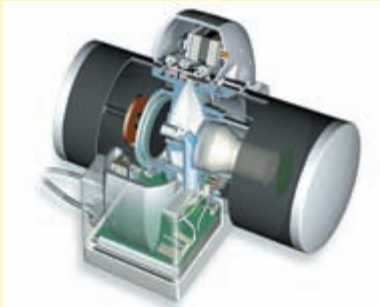
Comparison: Image Plate (IP) - Film



Material nature:	flexible	flexible
Format:	variable (max. 35 x 50 cm)	variable (max. 35 x 43 cm)
Resolution:	very good	very good
Reusability:	about 1000 times	once
Greyscales:	65,536 (16 bit)	about 700
Linearity:	about 5 decades	2 - 3 decades
Exposure time:	IP about 10 to 20 times faster than film	

[Complete product range at www.biostep.de]





Technical data and features:

- Dynamic range: 65,536 greyscales (16 bit)
- Resolution: from 12.5 μm up to 200 μm (pixel size)
- Scan time: approx. 5 min (IP size 20 x 25 cm, 100 μm)
- Max. IP size: width 35 cm, length up to 50 cm
- Laser: LED laser (635 nm)
- Weight: 21 kg
- Dimensions (H x W x D): 39 x 38 x 52 cm
- Laser category: I (EN60825.1)
- Port: USB 2
- Power input: 120 W



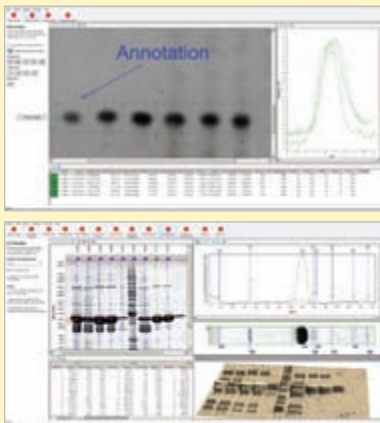
Equipment packages

CR35bio
including control software and Imaging Plate IP (18 x 24 cm)

Recommended PC
PC System Professional

Professional 1D Gel and Array analysis software

Four modules for comprehensive analysis

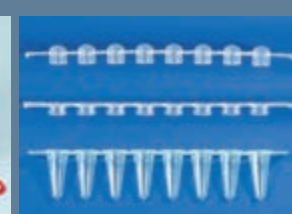
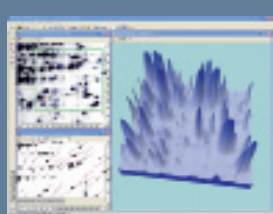


- Module for 1D electrophoresis gels
⇒ fully automatic or manual evaluation with multiplex analysis (4 channels)
- Module for arrays, dot blots, microtiter plates
⇒ evaluation of grid structures up to 48 x 32 with multiplex analysis (4 channels)
- Module for colony counting and capture of 2D spots
⇒ automated detection and computation
- Module for TLC, autoradiographies, unspecific structures
⇒ freely definable lines and areas

CLIQS, single licence

CLIQS 1D 21 CFR, single licence

[Complete product range available at www.biostep.de]

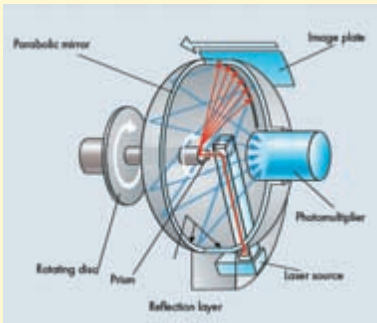




Reading and erasing Image Plate (IP) in one run

- the integrated eraser allows simultaneous reading and erasing of the image plate in one run
- defeatable function
- no dark hood necessary

**Special Feature:
Integrated Eraser**



Technical information on Image Plates (IPs)

- read by rotating laser beam
- under normal conditions more than 1000 times reusable (except 3H IP)
- coated with protective foil
- easy to clean (wipeable)



Standard Sizes:

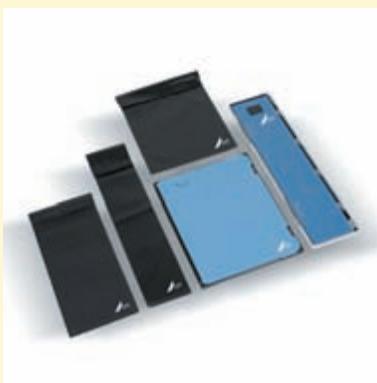
Image Plate IP, 18 x 24 cm	BR35-P1824
Image Plate IP, 24 x 30 cm	BR35-P2430
Image Plate IP, 30 x 40 cm	BR35-P3040
Image Plate IP, 35 x 43 cm	BR35-P3543



Special Sizes:

Image Plate IP, 20 x 25 cm	BR35-P2025
Image Plate IP, 20 x 40 cm	BR35-P2040
Image Plate IP, 35 x 50 cm	BR35-P3550

- More special sizes, tritium plates and accessories on request



Cassettes:

Image Plate Cassette IPC, 18 x 24 cm	BR10-C1824
Image Plate Cassette IPC, 24 x 30 cm	BR10-C2430
Image Plate Cassette IPC, 30 x 40 cm	BR10-C3040
Image Plate Cassette IPC, 35 x 43 cm	BR10-C3543
Image Plate Cassette IPC, 20 x 25 cm	BR10-C2025
Image Plate Cassette IPC, 20 x 40 cm	BR10-C2040
Image Plate Cassette IPC, 35 x 50 cm	BR10-C3550

Your dealer:



biostep® GmbH
 Innere Gewerbestraße 7
 09235 Burkhardtsdorf, Germany
 Tel. +49(0) 3721-39 05-0
 Fax +49(0) 3721-39 05-28
 E-Mail: info@biostep.de

www.biostep.de